



WARNING

To reduce the risk of injury, read and understand these safety warnings and instructions before using the tool. Keep these instructions with the tool for future reference. If you have any questions, contact your **SIDCHROME** representative or distributor.



WARNING



IMPORTANT SAFETY INFORMATION ENCLOSED.

READ THIS MANUAL BEFORE OPERATING MACHINE.

IT IS THE RESPONSIBILITY OF THE EMPLOYER TO PLACE THE INFORMATION IN THIS MANUAL INTO THE HANDS OF THE OPERATOR.

FAILURE TO OBSERVE THE FOLLOWING WARNINGS COULD RESULT IN INJURY.

Placing Tool In Service

- Always operate, inspect and maintain this tool in accordance with all regulations (local, state, federal and country), that may apply to hand held/hand operated pneumatic tools.
- For safety, top performance, and maximum durability of parts, operate this tool at 90 psig (6.2 bar/620 kPa) maximum air pressure at the inlet with 3/8" (10 mm) inside diameter air supply hose.
- Always turn off the air supply and disconnect the air supply hose before installing, removing or adjusting any accessory on this tool, or before performing any maintenance on this tool.
- Do not use damaged, frayed or deteriorated air hoses and fittings.
- Be sure all hoses and fittings are the correct size and are tightly secured.
- Always use clean, dry air at 90 psig (6.2 bar/620 kPa) maximum air pressure. Dust, corrosive fumes and/or excessive moisture can ruin the motor of an air tool.
- Do not lubricate tools with flammable or volatile liquids such as kerosene, diesel or jet fuel.
- Do not remove any labels. Replace any damaged label.
- The use of a hose whip is recommended. A coupler connected directly to the air inlet increases tool bulk and decreases tool maneuverability.
- For maximum performance, the coupler on the wall should be the next size larger than the coupler used on the tool. The coupler closest to the tool should not be less than the proper air supply hose size.

Using The Tool

- Always wear eye protection when operating or performing maintenance on this tool.
- Always wear hearing protection when operating this tool.
- Keep hands, loose clothing and long hair away from rotating end of tool.
- Anticipate and be alert for sudden changes in motion during start up and operation of any power tool.
- Keep body stance balanced and firm. Do not overreach when operating this tool. High reaction torques can occur at or below the recommended air pressure.
- Air powered tools can vibrate in use. Vibration, repetitive motions or uncomfortable positions may be harmful to your hands and arms. Stop using any tool if discomfort, tingling feeling or pain occurs. Seek medical advice before resuming use.
- Use accessories recommended by Sidchrome.
- This tool is not designed for working in explosive atmospheres.
- This tool is not insulated against electric shock.



Chisel-reference and operation

- Operate Cold Chisels at fast speeds unless used on light work. File cutting edge to sharpen, to split nuts, shear rivets, break or trim welds or for similar jobs.
- Operate panel cutters at a slight angle, with hammer handle parallel to work surface, on jobs such as removing rocker panels rear quarter panels, turret tops etc.
- Operate edger chisels at very low speed at first, gradually increasing speed until edger leaves a clean trimming cut on a SINGLE THICKNESS of metal. Keep the heel of the chisel on work and avoid excess power which will damage the chisel.
- Goo scrapers should be operated at moderate speeds and held at approx 45° to the work surface.

Keep chisels and cutters sharpened for best hammer performance

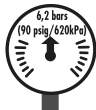


*Facom part number



WARNING

WARNING LABEL IDENTIFICATION. FAILURE TO OBSERVE THE FOLLOWING WARNINGS COULD RESULT IN INJURY.



Operate at 90 psig (6.2 bar/ 620 kPa) Maximum air pressure.



Do not use damaged, frayed or deteriorated air hoses and fittings.



Air powered machine can vibrate in use. Vibration, repetitive motions or uncomfortable positions may be harmful to your hands and arms. Stop using any machine if discomfort, tingling feeling or pain occurs. Seek medical advice before resuming use.



Do not carry the machine by the hose.



Keep body stance balanced and firm. Do not overreach when operating this machine. Do not use the machine under the influence of drugs, alcohol, medication or if you are tired.



Use protective equipment such as glasses, gloves, safety shoes as well as acoustic protection. Remain vigilant, use common sense and pay attention when using the machine.



Always turn off the air supply and disconnect the air supply hose before installing, removing or adjusting any accessory on this machine, or before performing any maintenance on this machine.



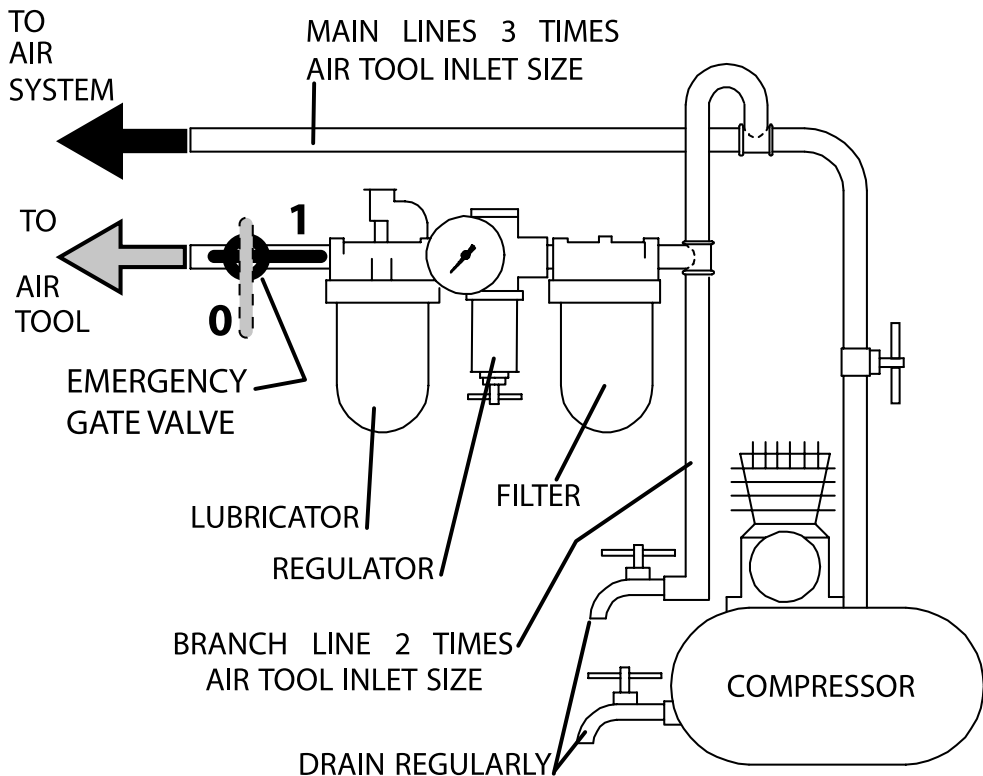
When working with certain materials, exposure to dust may be dangerous for health. Get information on the composition of the material you are working on and use suitable protective equipment. If in doubt, use as much protection as possible.

Getting Started With The Machine

LUBRICATION

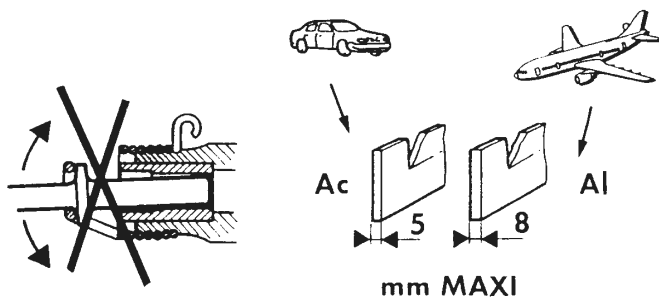


- Always use of an air line lubricator with these tools. We recommend USING Sidchrome fresh air oil SCMTSAT0-250
- Before using and at the end of each day's use, pour a liberal quantity of gum solvent into air inlet. Connect air hammer to air line WITH CHISEL IN THE TOOL AND THE CHISEL AGAINST A FIRM SUPPORT, operate hammer to allow oil to be carried to the interior and to flush accumulations of gum and dirt out of the exhaust. This will help prevent rust and corrosion.
- The use of synthetic oil is not recommended because of possible damage to seals, "O" rings, house and polycarbonate oiler/filter bowls.

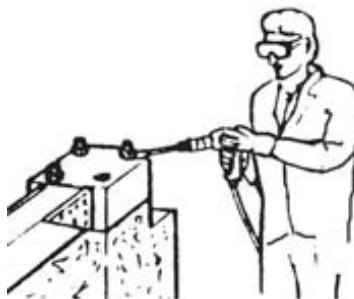





WARNING - BEFORE EACH OPERATION, CHECK THE CONDITION OF THE SAFETY DEVICES.

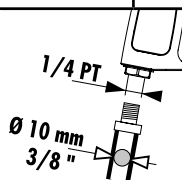


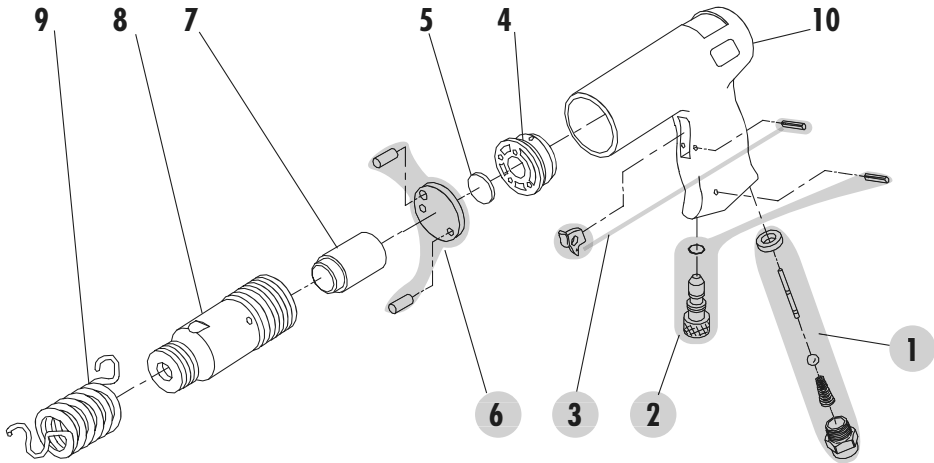
WARNING - WEAR APPROPRIATE PROTECTION



Model		Blows per Minute	Noise level dB(A)		Vibrations level	Air consumption
	mm		Pressure	Power		
SCMTSA-AH	10.2	3000	104	115	19.5	283

Model	Working pressure	Weight	Dimensions
	bar	kg	mm
SCMTSA-AH	6.2	1.58	169x52x160





N°	SCMTSA-AH	Qty		N°	SCMTSA-AH	Qty
1	V.320FHKR1	1		8	V.320FHSAV18	1
2	V.320FHKR2	1		9	V.310RRN1	1
3	V.320FHKR3	1		10	V.320FHSAV16	1
4	V.320FHSAV02	1				
5	V.320FHSAV03	1				
6	V.320FHKR4	1				
7	V.320FHSAV17	1				

SCMTSA-AH
Operation and Maintenance Manual



NOTICE

SAVE THESE INSTRUCTIONS. DO NOT DESTROY.

When the life of the tool has expired, it is recommended that the tool be disassembled, degreased and parts be separated by material so that they can be recycled.



**YOU CANNA
HAND A MAN
A GRANDER
SPANNER**

Sidchrome Australia National Call Centre 1800 338 002
Sidchrome New Zealand 0800 339 258
© Sidchrome is a Registered Trademark.



Manufactured in Taiwan to Sidchrome's design & specifications © 2014

AIR HAMMER