



SIDCHROME[®]



SCMTSA-375RTW SCMTSA-500RTW

Operation and Maintenance Manual

- ☒ 3/8" SCMTSA-375RTW
- ☒ 1/2" SCMTSA-500RTW



WARNING

To reduce the risk of injury, read and understand these safety warnings and instructions before using the tool. Keep these instructions with the tool for future reference. If you have any questions, contact your **SIDCHROME** representative or distributor.



3/8" and 1/2" Right Angle Impact



TABLE OF CONTENTS

Introduction	2
Safety Instructions	3
Specifications	4
Getting Started	5
Tool Components	6
Contact Information	8

INTRODUCTION

The **Sidchrome™ SCMTSA-375RTW** and **SCMTSA-500RTW** are precision-built tools, designed for professionals for high torque assembly and disassembly of threaded fasteners. These tools will deliver efficient, dependable service when used correctly and with care. As with any fine power tool, for best performance the manufacturer's instructions must be followed. Please study this manual before operating the tool and understand the safety warnings and instructions. The instructions on installation, operation and maintenance should be read carefully, and the manuals kept for reference. NOTE: Additional safety measures may be required because of your particular application of the tool. Contact your **Sidchrome** representative or distributor with any questions concerning the tool and its use.

Sidchrome
82 Taryn Drive
Epping Victoria 3076
Australia

Customer Service Phone Number
1 800 338 002





WARNING

IMPORTANT SAFETY INFORMATION ENCLOSED.
READ THIS MANUAL BEFORE OPERATING THE MACHINE.

FAILURE TO OBSERVE THE FOLLOWING WARNINGS COULD RESULT IN INJURY.



Do not use damaged, frayed or deteriorated air hoses and fittings.



Air powered tools can vibrate in use. Vibration, repetitive motions or uncomfortable positions may be harmful to your hands and arms. Stop using any tool if discomfort, tingling feeling or pain occurs. Seek medical advice before resuming use.



Do not carry the tool by the hose.



Keep body stance balanced and firm. Do not overreach when operating this tool.



Always wear hearing protection when operating this tool.



Always turn off the air supply and disconnect the air supply hose before installing, removing or adjusting any accessory on this tool, or before performing any maintenance on this tool.



Always wear eye protection when operating or performing maintenance on this tool.



Operate at 90 psig (6.2 bar / 620 kPa) Maximum air pressure.

GENERAL SAFETY INSTRUCTIONS



WARNING

- Always wear ANSI Z87.1 eye protection when operating or performing maintenance on this tool. Everyday eye glasses are not safety glasses
- Always wear hearing protection when operating this tool
- Keep hands, loose clothing and long hair away from rotating end of tool
- Anticipate and be alert for sudden changes in motion during start up and operation of any power tool
- Keep body stance balanced and firm. Do not overreach when operating this tool
- Do not operate this tool for long periods of time. Vibration caused by tool action may be harmful to your hands and arms. Stop using any tool if discomfort, tingling feeling or pain occurs. Seek medical advice before resuming use
- Use impact rated accessories recommended by **Sidchrome** only. Inspect accessories before use. Do not use cracked or damaged accessories
- Do not operate this tool in the presence of flammable liquids, gasses, dust, or explosive atmospheres
- This tool is not insulated against electric shock
- Always turn off the air supply and disconnect the air supply hose before installing, removing or adjusting any accessory on this tool, or before performing any maintenance on this tool
- For safety, top performance, and maximum durability of parts, operate this tool at 90 psig (6.2 bar / 620 kPa) maximum air pressure at the inlet with 3/8" (10mm) inside diameter air supply hose
- Do not use damaged, frayed or deteriorated air hoses and fittings
- Do not lubricate tools with flammable or volatile liquids such as kerosene, diesel or jet fuel
- Do not remove any labels. Replace any damaged label





SPECIFICATIONS

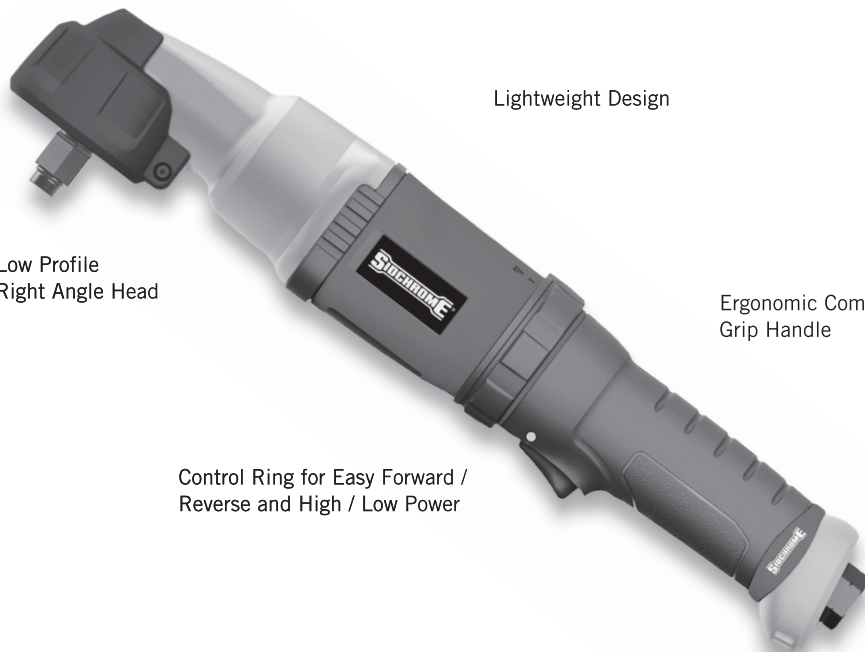
Protective Head Cover

Lightweight Design

Low Profile
Right Angle Head

Ergonomic Comfort
Grip Handle

Control Ring for Easy Forward /
Reverse and High / Low Power



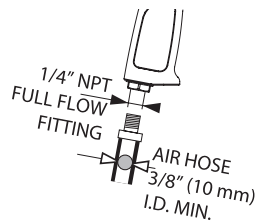
SPECIFICATIONS

Model #	Square Drive in	Blow Rate		Breakaway Torque ft-lbs / Nm	Noise Level						Vibration Level	
		forward (bpm)	reverse (bpm)		Pressure dB(A)		Power dB(A)		Pressure dB(C)		m/s ²	
SCMTSA-375RTW	3/8	1600	1700	170 / 230	96	3*	107	3*	120	3*	46.52	14.61**
SCMTSA-500RTW	1/2	1600	1700	200 / 271	98	3*	109	3*	123	3*	29.96	14.35**

Model #	Free Speed rpm	Average Air Consumption cfm / l/min	Working Pressure psi / bar	Weight lbs / kg	Dimensions in / mm
SCMTSA-375RTW	7200	5 / 143	90 / 6.2	4.0 / 1.8	13.9 x 2.5 x 3.1 / 353 x 63 x 80
SCMTSA-500RTW	7200	5 / 143	90 / 6.2	4.0 / 1.8	13.9 x 2.5 x 3.1 / 353 x 63 x 80

* = measurement uncertainty in dB(A)

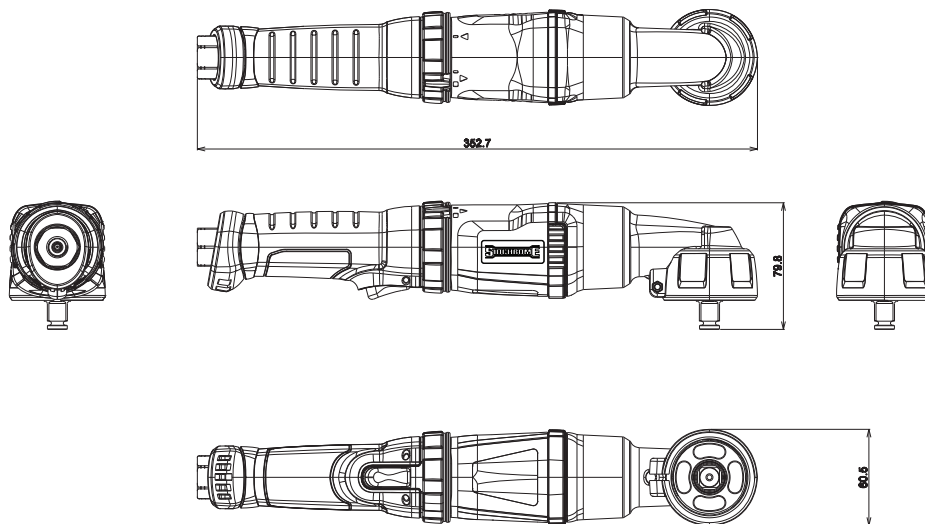
** = measurement uncertainty in m/s²





GETTING STARTED

- Always operate, inspect and maintain this tool in accordance with all regulations (local, state, federal and country) that may apply to hand-held / hand-operated pneumatic tools
- Be sure all hoses and fittings are the correct size and are tightly secured
- Always use clean, dry air at 90 psig maximum air pressure. Dust, corrosive fumes and/or excessive moisture can ruin the motor of an air tool
- The use of a hose whip is recommended. A coupler connected directly to the air inlet increases tool bulk and decreases tool maneuverability
- For maximum performance, the coupler on the wall should be the next size larger than the coupler used on the tool. The coupler closest to the tool should not be less than the proper air supply hose size



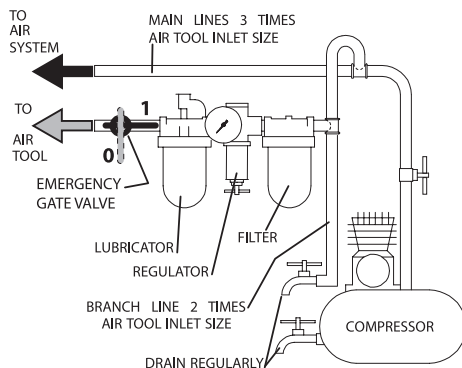
PLACING TOOL IN SERVICE

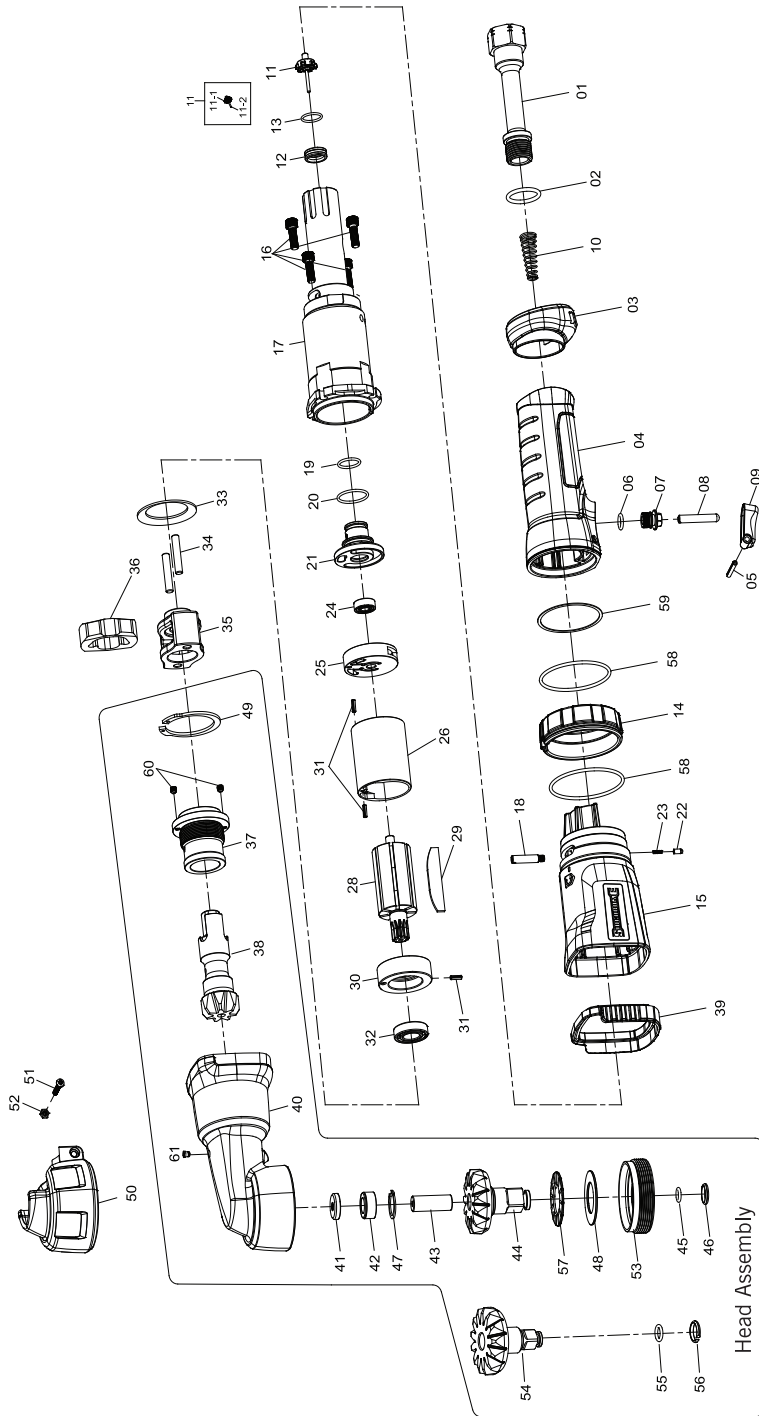
LUBRICATION



Always use an air line lubricator with this tool. After every eight hours of operation, if a lubricator is not used on the compressed air network, inject 1/2 to 1 cc of approved air tool oil through the tool's inlet connection. Recommended air tool oil available from Sidchrome SCMTSATO-250.

After every forty-eight hours of operation, or as experience indicates, inject about 4 cc of approved pneumatic grease into the grease fitting.







ITEM #	PART #	DESCRIPTION	QTY
	SCMTSA-375RTW	3/8" Drive Right Angle Impact	
	SCMTSA-500RTW	1/2" Drive Right Angle Impact	
1	30P200035	Air Inlet	1
3	30H200384	Exhaust Deflector	1
4	30H100035-04	Handle Grip-Sichrome	1
7	30P200038	Valve Stem Seat	1
8	30P200039	Valve Stem	1
9	30P200023	Trigger	1
10	30R200273	Valve Spring	1
11	30P100040	Throttle Tip Valve Assembly	1
12	31Y200011	Throttle Valve Seat	1
14	30H200381	Reverse Ring	1
15	30H200380-03	Housing-Sichrome	1
15-1	30L200056	Label-Specification (1/2" - not shown)	1
15-2	30L200050	Label-Specification (3/8" - not shown)	1
16	30R200275	Screw (M5*16) With Washer	4
17	30H200435	Motor/Handle Housing	1
18	30R200276	Pin	1
21	30P200037	Reverse Valve	1
22	31R200250	Detent Pin	1
23	31R200249	Detent Spring	1
25	30M200085	Rear End Plate	1
26	30M200086	Cylinder	1
28	30M200087	Rotor	1
30	30M200089	Front End Plate	1
31	30R200283	Lock (Spring) Pin	3
33	30R200285	Motor Clamp Washer	1
39	30H200382	Gasket	1
50	30H200385	Boot - Angle Head	1
51	30R200325	Screw	1
52	30R200326	Hex Nut	1
	30Y100005	SOFT PARTS KIT	
2		O-Ring	1
5		Lock (Spring) Pin	1
6		O-Ring P7	1
13		O-Ring	1
19		O-Ring	1
20		O-Ring	1
58		O-Ring S-46 (4.5*5*2)	2
59		Gasket	1
	30M100130	MOTOR TUNE-UP KIT	
24		Bearing	1
29		Blade	7
32		Bearing	1



SIDCHROME
82 TARYN DRIVE
EPPING VICTORIA 3076
AUSTRALIA

Customer Service Phone Number
1 800 338 002

Copyright © 2014 SIDCHROME

Manual #30L200175