



SCMTSA-250M

Operation and Maintenance Manual

1/4" SCMTSA-250M



WARNING

To reduce the risk of injury, read and understand these safety warnings and instructions before using the tool. Keep these instructions with the tool for future reference. If you have any questions, contact your **SIDCHROME** representative or distributor.



1/4" Mini Air Ratchet



TABLE OF CONTENTS

Introduction	2
Safety Instructions	3
Specifications	4
Getting Started	5
Tool Components	6
Contact Information	8

INTRODUCTION

The **Sidchrome™ SCMTSA-250M** is a precision-built tool, designed for professionals, for torque assembly and disassembly of threaded fasteners. This tool will deliver efficient, dependable service when used correctly and with care. As with any fine power tool, for best performance the manufacturer's instructions must be followed. Please study this manual before operating the tool and understand the safety warnings and instructions. The instructions on installation, operation and maintenance should be read carefully, and the manuals kept for reference. NOTE: Additional safety measures may be required because of your particular application of the tool. Contact your **Sidchrome** representative or distributor with any questions concerning these tools and their use.

Sidchrome
82 Taryn Drive
Epping Victoria 3076
Australia

Customer Service Phone Number
1 800 338 002





WARNING

IMPORTANT SAFETY INFORMATION ENCLOSED.
READ THIS MANUAL BEFORE OPERATING THE MACHINE.

FAILURE TO OBSERVE THE FOLLOWING WARNINGS COULD RESULT IN INJURY.



Do not use damaged, frayed or deteriorated air hoses and fittings.



Air powered tools can vibrate in use. Vibration, repetitive motions or uncomfortable positions may be harmful to your hands and arms. Stop using any tool if discomfort, tingling feeling or pain occurs. Seek medical advice before resuming use.



Do not carry the tool by the hose.



Keep body stance balanced and firm. Do not overreach when operating this tool.



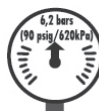
Always wear hearing protection when operating this tool.



Always turn off the air supply and disconnect the air supply hose before installing, removing or adjusting any accessory on this tool, or before performing any maintenance on this tool.



Always wear eye protection when operating or performing maintenance on this tool.



Operate at 90 psig (6.2 bar / 620 kPa) Maximum air pressure.

GENERAL SAFETY INSTRUCTIONS



WARNING

- Always wear ANSI Z87.1 eye protection when operating or performing maintenance on this tool. Everyday eye glasses are not safety glasses
- Always wear hearing protection when operating this tool
- Keep hands, loose clothing and long hair away from rotating end of tool
- Anticipate and be alert for sudden changes in motion during start up and operation of any power tool
- Keep body stance balanced and firm. Do not overreach when operating this tool
- Do not operate this tool for long periods of time. Vibration caused by tool action may be harmful to your hands and arms. Stop using any tool if discomfort, tingling feeling or pain occurs. Seek medical advice before resuming use
- Use impact rated accessories recommended by **Sidchrome** only. Inspect accessories before use. Do not use cracked or damaged accessories
- Do not operate this tool in the presence of flammable liquids, gasses, dust, or explosive atmospheres
- This tool is not insulated against electric shock
- Always turn off the air supply and disconnect the air supply hose before installing, removing or adjusting any accessory on this tool, or before performing any maintenance on this tool
- For safety, top performance, and maximum durability of parts, operate this tool at 90 psig (6.2 bar / 620 kPa) maximum air pressure at the inlet with 3/8" (10mm) inside diameter air supply hose
- Do not use damaged, frayed or deteriorated air hoses and fittings
- Do not lubricate tools with flammable or volatile liquids such as kerosene, diesel or jet fuel
- Do not remove any labels. Replace any damaged label





SPECIFICATIONS

Closed head for
reduced maintenance
and longer life

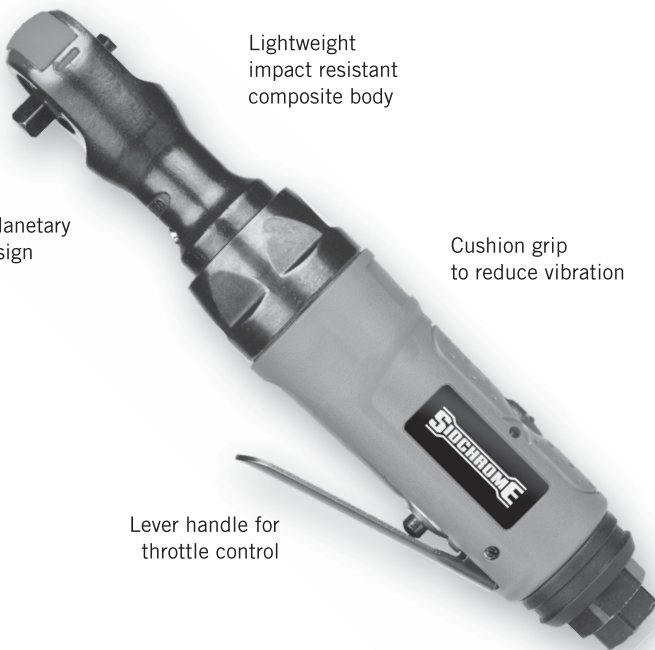
Lightweight
impact resistant
composite body

Triple planetary
gear design

Cushion grip
to reduce vibration

Lever handle for
throttle control

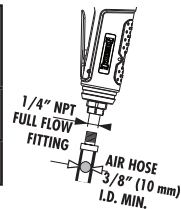
Rotating
air inlet



SPECIFICATIONS

Model #	Square Drive in	Max Torque ft-lbs / NM	Noise Level						Vibration Level	
			Pressure dB(A)		Power dB(A)		Pressure dB(C)		m/s ²	
SCMTSA-250M	1/4	20 / 27	91.4	3*	102.4	3*	93.9	3*	1.76	0.67**

Model #	Free Speed	Average Air Consumption	Working Pressure	Weight	Dimensions
	rpm	cfm / l / min	psi / bar	lbs / kg	in / mm
SCMTSA-250M	250	2.8 / 79	90 / 6.2	1.5 / .7	8.2 x 2.0 x 1.4 / 208 x 52 x 36



* = measurement uncertainty in dB(A)

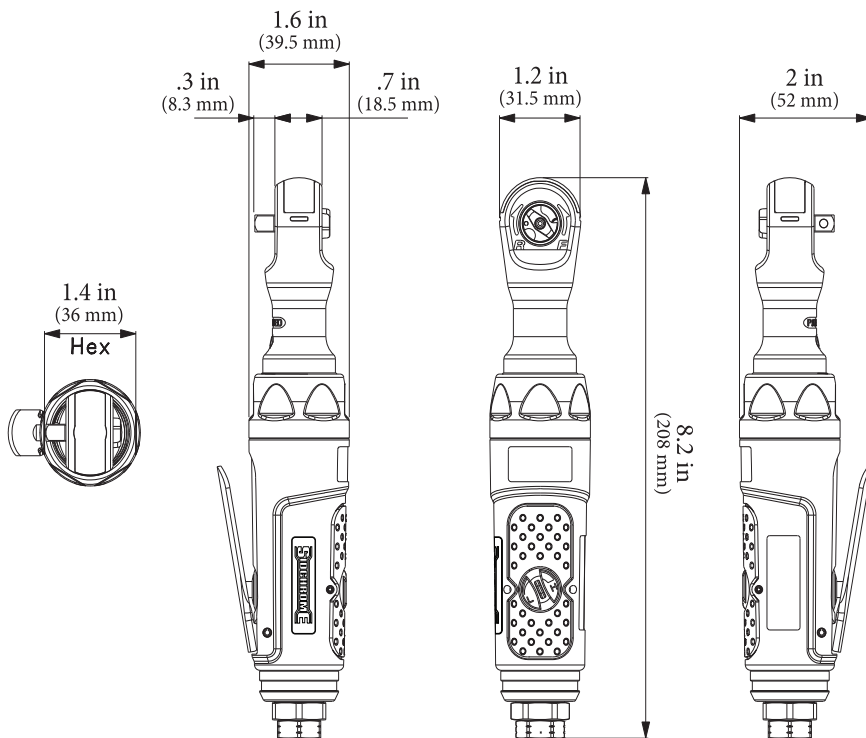
** = measurement uncertainty in m/s²





GETTING STARTED

- Always operate, inspect and maintain this tool in accordance with all regulations (local, state, federal and country) that may apply to hand-held / hand-operated pneumatic tools
- Be sure all hoses and fittings are the correct size and are tightly secured
- Always use clean, dry air at 90 psig maximum air pressure. Dust, corrosive fumes and/or excessive moisture can ruin the motor of an air tool
- The use of a hose whip is recommended. A coupler connected directly to the air inlet increases tool bulk and decreases tool maneuverability
- For maximum performance, the coupler on the wall should be the next size larger than the coupler used on the tool. The coupler closest to the tool should not be less than the proper air supply hose size



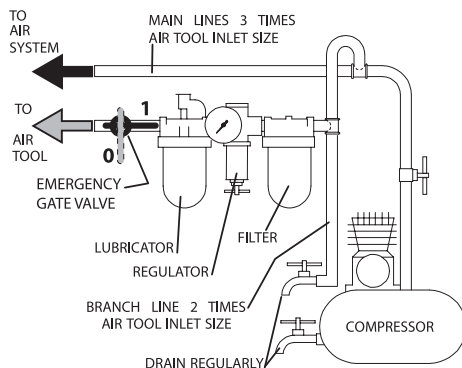
PLACING TOOL IN SERVICE

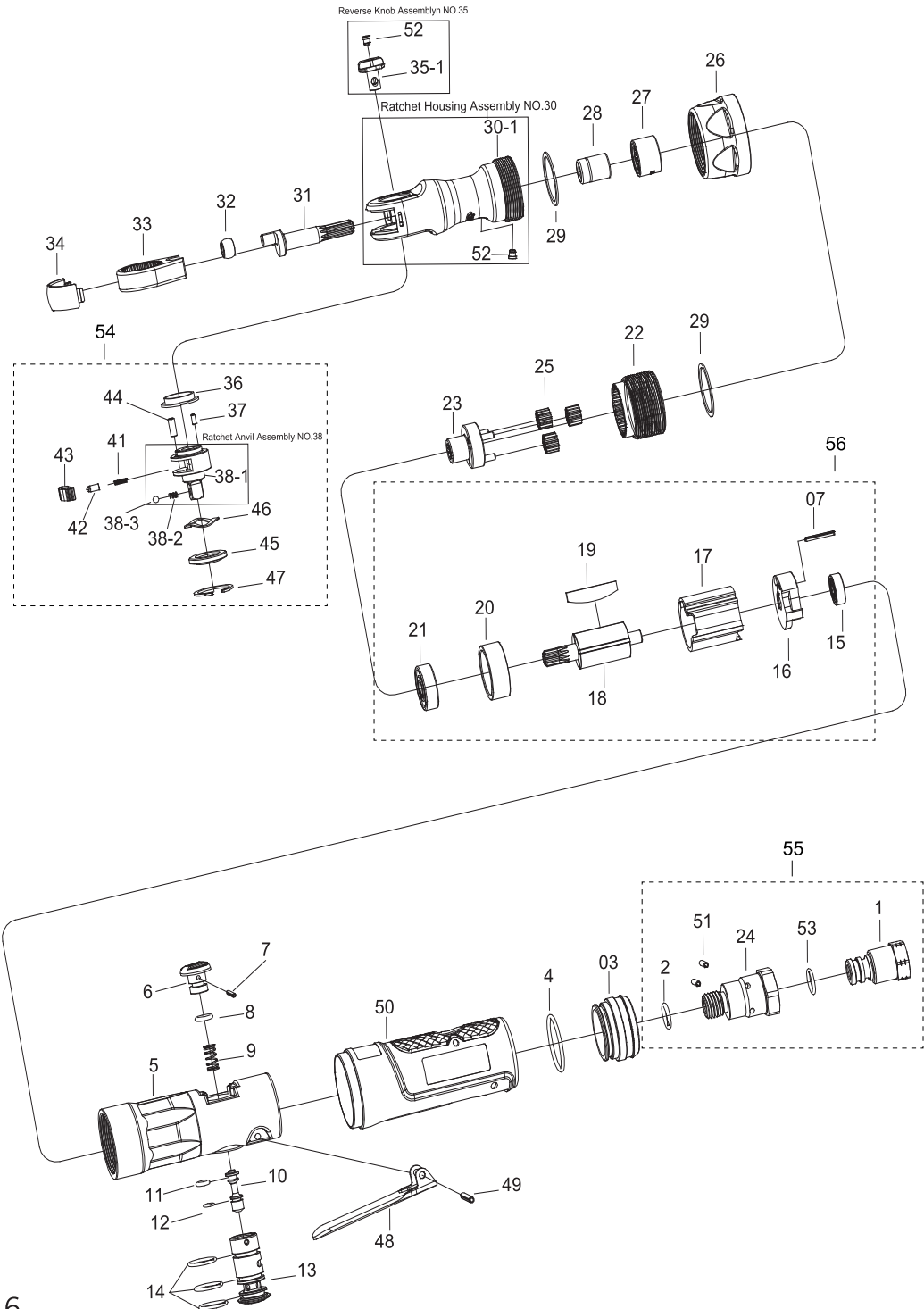
LUBRICATION



Always use an air line lubricator with this tool. After every eight hours of operation, if a lubricator is not used on the compressed air network, inject 1/2 to 1 cc of approved air tool oil through the tool's inlet connection. Recommended air tool oil available from Sidchrome SCMTSATO-250.

After every forty-eight hours of operation, or as experience indicates, inject about 4 cc of approved pneumatic grease into the grease fitting.







ITEM #	PART #	DESCRIPTION	QTY
54	31K100104	1/4" RATCHET ANVIL KIT	1
38	Pre-Assembled	Ratchet Anvil Assembly	1
36	loose	Thrust Washer	1
37	Pre-Assembled	Spring Pin	1
41	Pre-Assembled	Ratchet Spring	1
42	Pre-Assembled	Ratchet Lock Pin	1
43	Pre-Assembled	Ratchet Pawl	1
44	Pre-Assembled	Pawl Retaining Pin	1
45	loose	Thrust Washer	1
46	loose	Wave Washer	1
47	loose	Retaining Ring	1
55	31K100108	INLET FOR ARM	1
1	Pre-Assembled	Air Inlet	1
2	Pre-Assembled	O-Ring	1
24	Pre-Assembled	Air inlet connector	1
51	Pre-Assembled	Spring Pin	2
53	Pre-Assembled	O-Ring	1
56	31K100110	MOTOR FOR ARP & ARM	1
7	Pre-Assembled	Spring Pin	1
15	Pre-Assembled	Ball Bearing	1
16	Pre-Assembled	Rear End Plate	1
17	Pre-Assembled	Cylinder	1
18	Pre-Assembled	Rotor	1
19	Pre-Assembled	Rotor Blade	4
20	Pre-Assembled	Front End Plate	1
21	Pre-Assembled	Ball Bearing	1
	31K100112	TUNE-UP KIT	1
4		O-Ring	1
8		O-Ring	1
9		Spring	1
11		O-Ring	1
12		O-Ring	1
14		O-Ring	3

ITEM #	PART #	DESCRIPTION	QTY
	SCMTSA-250M	1/4" Mini Air Ratchet	
3	31Y200070	Exhaust Deflector	1
5	31H200017	Motor Housing	1
6	31P200001	Air Regulator	1
7	31R200238	Spring Pin	1
10	31P200002	Throttle Valve Plunger	1
13	31P200003	Air Regulator	1
22	31G200022	Ring Gear	1
23	31G200023	Work Spindle	1
25	31G200024	Planet Gear	3
26	31H200018	Coupling Nut	1
27	31R200243	Ball Bearing	1
28	31R200207	Bushing	1
29	31R200244	Spacer	2
31	31D200050	Crank shaft	1
32	31D200051	Drive Bushing	1
33	31D200052	Ratchet Yoke	1
34	31Y200071	Ratchet Housing Cover	1
36	31R200245	Thrust Washer	1
45	31R200252	Thrust Washer	1
46	31R200253	Wave Washer	1
47	31R200254	Retaining Ring	1
48	31P200005	Trigger	1
49	31R200255	Spring Pin	1
50	31H200034	Rubber Grip	1
35	31Y100000	REVERSE KNOB ASSEMBLY	1
35-1	Pre-Assembled	Reverse Knob	1
52	Pre-Assembled	Grease Fitting	1
38	31D100026	RATCHET ANVIL ASSEMBLY	1
38-1	Pre-Assembled	Ratchet Anvil	1
38-2	Pre-Assembled	Spring	1
38-3	Pre-Assembled	Steel Ball	1
30	31H100022	RATCHET HOUSING	1
30-1	Pre-Assembled	Ratchet Housing	1
52	Pre-Assembled	Grease Fitting	1



SIDCHROME
82 TARYN DRIVE
EPPING VICTORIA 3076
AUSTRALIA

Customer Service Phone Number
1 800 338 002

Copyright © 2014 SIDCHROME

Manual #30L200181