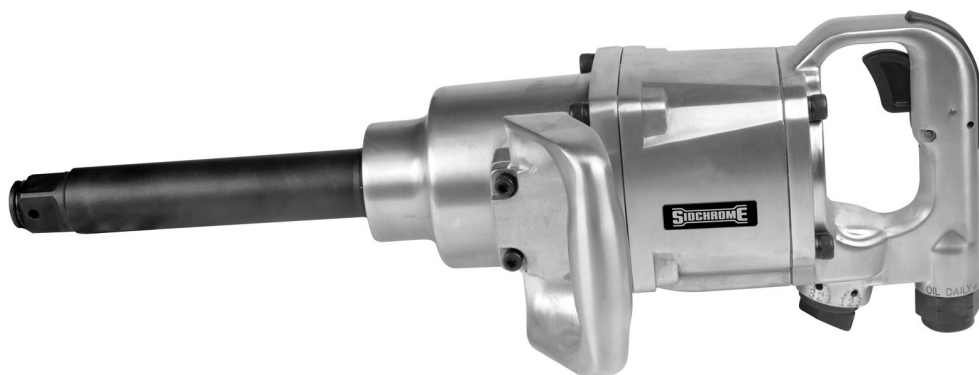




SCMTSA-1LHD

Operation and Maintenance Manual



WARNING

To reduce the risk of injury, read and understand these safety warnings and instructions before using the tool. Keep these instructions with the tool for future reference. If you have any questions, contact your **SIDCHROME** representative or distributor.

1" SQUARE DRIVE AIR IMPACT WRENCH

TABLE OF CONTENTS

Introduction	3	Getting Started	5
Specifications	3	Tool Components	6
Safety Instructions	4	Contact Information	8

WARRANTY

Sidchrome air tools are warranted for TWO (2) years from the date of purchase, excluding normally wearing parts such as vanes, gaskets and o-rings;

1. Unless otherwise specified, this warranty does not cover:

- (a) modified, abused, neglected, accidentally damaged or excessively worn products, or products that have become damaged or defective as a result of improper use;
- (b) repairs attempted or made by other than our regional repair centre or authorised warranty service centre;
- (c) conditions or malfunctions caused by the reasonable effects of fair wear and tear or the malfunction of normally wearing parts, which include but are not limited to: vanes, gaskets, o-rings, driver blades, bumpers, pistons and piston rings;

(Warranty non-transferrable) This warranty is not transferrable beyond the original purchaser.

2. How to make a warranty claim

Unless otherwise specified, the process for making a warranty claim is as follows:

- (a) Any product subject to a warranty claim should be returned to the place of purchase for assessment by a Sidchrome Australia distributor or representative. You are responsible for returning the product to the place of purchase unless the cost of returning, removing or transporting the product is significant, in which case you should contact Sidchrome Australia to make alternative arrangements.
- (b) You must present proof of purchase when making a warranty claim.
- (c) The claim under this warranty (you may have additional rights under the Australian Consumer Law) will be assessed by a Sidchrome Australia distributor or representative on the basis of their product knowledge and reasonable judgment and will be accepted if:
 - (i) a relevant defect is found;
 - (ii) the warranty claim is made during the relevant warranty period
 - (iii) none of the exclusions in cl 1. of this warranty apply.
- (d) Upon acceptance of a claim under this warranty, Sidchrome Australia will send you a replacement product or arrange for your product to be repaired free of charge.
- (e) Any warranty related enquiries or claims may be directed to Sidchrome Australia at the address or contact details listed below.

3. Repair notices

Goods presented for repair may be replaced by refurbished goods of the same type rather than being repaired.

Refurbished parts may be used to repair the goods.

The repair of your goods may result in the loss of any user-generated data. Please ensure that you have made a copy of any data saved on your goods.

The Consumer Guarantee Statement

Our goods come with guarantees that cannot be excluded under Australian Consumer Law. You are entitled to a replacement or refund for a major failure and compensation for any other reasonably foreseeable loss or damage. You are also entitled to have the goods repaired or replaced if the goods fail to be of acceptable quality and the failure does not amount to a major failure.

Warranty related enquiries and claims may be directed to:

Sidchrome Australia

82 Taryn Drive, Epping, Victoria 3076

<http://www.sidchrome.com.au/contact>

Australia

Phone 1800 338 002

Fax 1800 080 898

New Zealand

Phone 0800 4782 6539

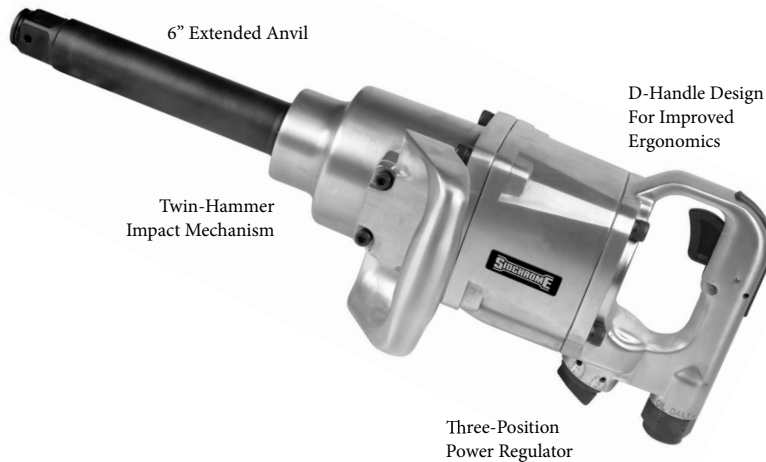
Fax 0800 278 265

INTRODUCTION

The **Sidchrome® SCMTSA-1LHD** is a precision-built tool, designed for high torque assembly and disassembly of threaded fasteners. This tool will deliver efficient, dependable service when used correctly and with care. As with any fine power tool, for best performance the manufacturer's instructions must be followed. Please study this manual before operating the tool and understand the safety warnings and cautions. The instructions on installation, operation and maintenance should be read carefully, and the manuals kept for reference. NOTE: Additional safety measures may be required because of your particular application of the tool. Contact your **Sidchrome®** representative or distributor with any questions concerning the tool and its use.

Sidchrome®
82 Taryn Drive, Epping
Victoria, Australia 3076
1800 338 002
Sidchrome.com.au

SPECIFICATIONS



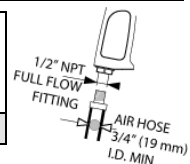
SPECIFICATIONS

Model #	Square Drive	Blow Rate	Breakaway Torque	Noise Level						Vibration Level	
	in	bpm	ft-lbs / Nm	Pressure dB(A)		Power dB(A)		Pressure dB(C)		m/s ²	
SCMTSA-1LHD	1	720	3000 / 4068	102.0	3*	112.9	3*	102.0	3*	15.24	2**

Model #	Free Speed	Average Air Consumption	Working Pressure	Weight	Dimensions
	rpm	cfm / l/min	psi / bar	lbs / kg	in / mm
SCMTSA-1LHD	4500	8.6 / 243	90 / 6.2	24.2 / 11.0	20.7 x 8.0 x 6.8 / 525 x 203 x 172

* = measurement uncertainty in dB(A)

** = measurement uncertainty in m/s²



⚠ WARNING

IMPORTANT SAFETY INFORMATION ENCLOSED.
READ THIS MANUAL BEFORE OPERATING THE MACHINE.

FAILURE TO OBSERVE THE FOLLOWING WARNINGS COULD RESULT IN INJURY.



Do not use damaged, frayed or deteriorated air hoses and fittings.



Air powered tools can vibrate in use. Vibration, repetitive motions or uncomfortable positions may be harmful to your hands and arms. Stop using any tool if discomfort, tingling feeling or pain occurs. Seek medical advice before resuming use.



Do not carry the tool by the hose.



Keep body stance balanced and firm. Do not over-reach when operating this tool.



Always wear hearing protection when operating this tool.



Always turn off the air supply and disconnect the air supply hose before installing, removing or adjusting any accessory on this tool, or before performing any maintenance on this tool.



Always wear eye protection when operating or performing maintenance on this tool.



Operate at 90 psig (6.2 bar / 620 kPa) Maximum air pressure.

SAFE OPERATION

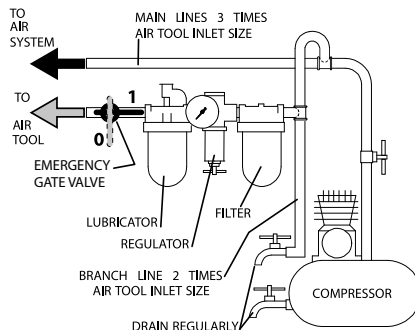
- Always wear eye protection when operating or performing maintenance on this tool.
- Always wear hearing protection when operating this tool.
- Keep hands, loose clothing and long hair away from rotating end of tool.
- Anticipate and be alert for sudden changes in motion during start up and operation of any power tool.
- Keep body stance balanced and firm. Do not overreach when operating this tool.
- Air powered tools can vibrate in use. Vibration, repetitive motions or uncomfortable positions may be harmful to your hands and arms. Stop using any tool if discomfort, tingling feeling or pain occurs. Seek medical advice before resuming use.
- Use impact rated accessories recommended by **Sidchrome®**.
- This tool is not designed for working in explosive atmospheres.
- This tool is not insulated against electric shock.
- Always turn off the air supply and disconnect the air supply hose before installing, removing or adjusting any accessory on this tool, or before performing any maintenance on this tool.

PLACING TOOL IN SERVICE

LUBRICATION

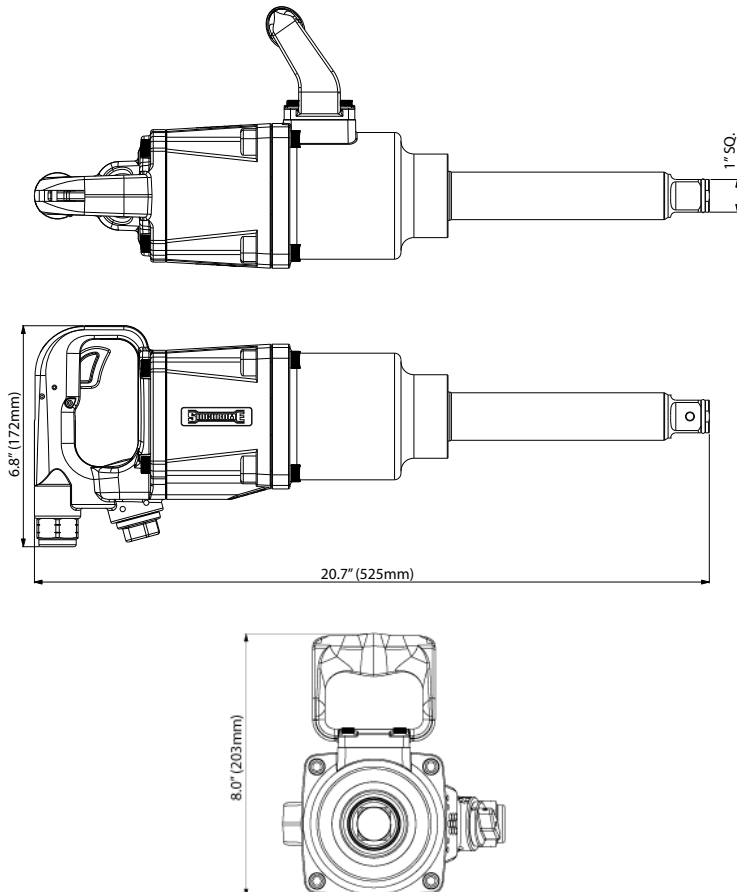


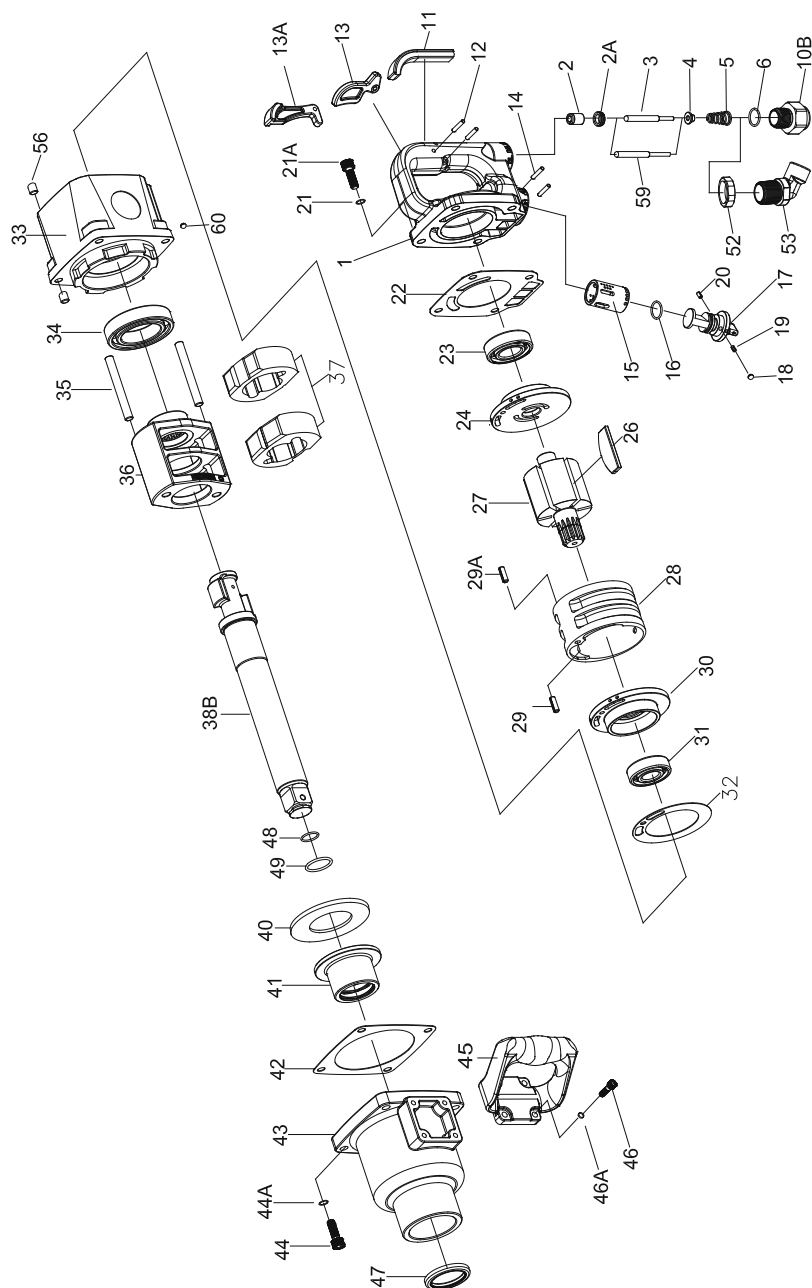
Always use an air line lubricator with this tool. After every eight hours of operation, if a lubricator is not used on the compressed air network, inject 1.5 cc of approved air tool oil through the tool's inlet connection. Recommended air tool oil available from Sidchrome SCMTSATO-250.



GETTING STARTED

- Always operate, inspect and maintain this tool in accordance with all regulations (local, state, federal and country) that may apply to hand-held / hand-operated pneumatic tools.
- For safety, top performance, and maximum durability of parts, operate this tool at 90 psig (6.2 bar / 620 kPa) maximum air pressure at the inlet with 3/4" (19mm) inside diameter air supply hose.
- Always turn off the air supply and disconnect the air supply hose before installing, removing or adjusting any accessory on this tool, or before performing any maintenance on this tool.
- Do not use damaged, frayed or deteriorated air hoses and fittings.
- Be sure all hoses and fittings are the correct size and are tightly secured.
- Always use clean, dry air at 90 psig maximum air pressure. Dust, corrosive fumes and/or excessive moisture can ruin the motor of an air tool.
- Do not lubricate tools with flammable or volatile liquids such as kerosene, diesel or jet fuel.
- Do not remove any labels. Replace any damaged label.
- The use of a hose whip is recommended. A coupler connected directly to the air inlet increases tool bulk and decreases tool maneuverability.
- For maximum performance, the coupler on the wall should be the next size larger than the coupler used on the tool. The coupler closest to the tool should not be less than the proper air supply hose size.





ITEM #	PART #	DESCRIPTION	QTY	ITEM #	PART #	DESCRIPTION	QTY
	SCMTSA-1LHD	1" Impact Wrench		46	31R100003	SCREW ASSEMBLY	4
A	31D100022	ANVIL ASSEMBLY	1	46A		SPRING WASHER	4
38B	31D200040	6" EXTENDED ANVIL	1				
48	31R200192	O-RING	1	2A	31Y200057	THROTTLE VALVE SEAT	1
49	31R200193	SOCKET RETAINER	1	3	31R200198	THROTTLE VALVE PLUNGER (INSIDE)	1
				4	31Y200058	THROTTLE VALVE	1
B	31H100016	HAMMER CASE ASSEMBLY	1	11	31H200006	RUBBER CAP (INSIDE)	1
41		BUSHING	1	12	31R200200	PIN	2
43		HAMMER CASE	1	13	31Y200059	INSIDE TRIGGER	1
44		SCREW ASSEMBLY	4	14	31R200201	SPRING PIN	2
44A		SPRING WASHER	4	27	31M200045	ROTOR	1
47		OIL SEAL	1	28	31M200046	CYLINDER	1
				29	31R200209	SPRING PIN	1
C	31D100023	IMPACT ASSEMBLY	1	29A	31R200183	SPRING PIN	1
35		HAMMER PIN	2	40	31R200187	WASHER	1
36		HAMMER FRAME	1	45	31H200007	SIDE SPADE HANDLE	1
37		HAMMER	2	59	31R200205	THROTTLE VALVE PLUNGER (OUTSIDE)	1
A	31D100022	ANVIL ASSEMBLY	1	TK	31M100015	TUNE UP KIT	
33	31H100027	HOUSING ASSEMBLY	1	5		SPRING	1
56		HELL-COIL	8	6		O-RING	1
60		STEEL BALL	4	16		O-RING	1
				18		STEEL BALL	1
1	31M100009	BACKHEAD ASSEMBLY	1	19		SPRING	1
2		BUSHING	1	22		GASKET	1
15		REVERSE VALVE BUSHING	1	23		BALL BEARING	1
				26		ROTOR BLADE	6
17	31P100011	REVERSE VALVE ASSEMBLY	1	31		BALL BEARING	1
20		SPRING PIN	1	32		GASKET	1
				34		BALL BEARING	1
24	31M100008	REAR END PLATE ASSEMBLY	1	42		GASKET	1
23		BALL BEARING	1	48		O-RING	1
				49		SOCKET RETAINER	1
30	31M100010	FRONT END PLATE ASSEMBLY	1				
31		BALL BEARING	1	10B	31Y200061	OPTIONAL - AIR INLET	
21A	31R100001	SCREW ASSEMBLY	4	13A	31Y200060	OPTIONAL - OUTSIDE TRIGGER	
21		SPRING WASHER	4	52	31R200204	OPTIONAL - LOCK NUT	
				53	31Y200062	OPTIONAL - AIR INLET	

SCMTSA-1LHD
Operation and Maintenance Manual



**YOU CANNA
HAND A MAN
A GRANDER
SPANNER**

Sidchrome Australia National Call Centre 1800 338 002
Sidchrome New Zealand 0800 339 258
© Sidchrome is a Registered Trademark.



Manufactured in Taiwan to Sidchrome's design & specifications © 2014

1" SQUARE DRIVE AIR IMPACT WRENCH