

**WARNING**

To reduce the risk of injury, read and understand these safety warnings and instructions before using the tool. Keep these instructions with the tool for future reference. If you have any questions, contact your **SIDCHROME** representative or distributor.



**WARNING**



**IMPORTANT SAFETY INFORMATION ENCLOSED.**

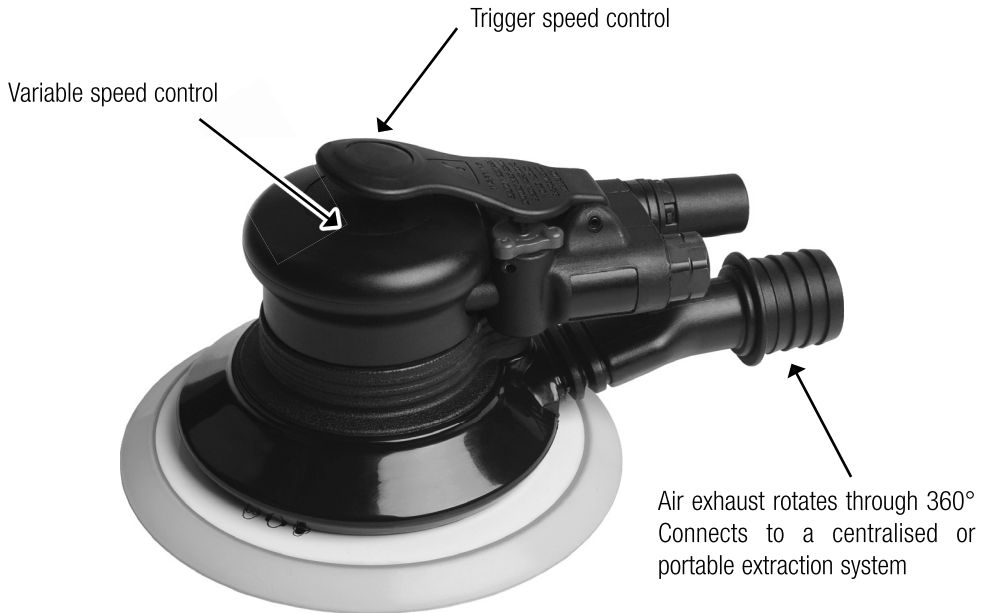
**READ THIS MANUAL BEFORE OPERATING MACHINE.**

**IT IS THE RESPONSIBILITY OF THE EMPLOYER TO PLACE THE INFORMATION IN THIS MANUAL INTO THE HANDS OF THE OPERATOR.**

**FAILURE TO OBSERVE THE FOLLOWING WARNINGS COULD RESULT IN INJURY.**

## Getting Started With The Machine

- SANDERS ARE ONLY INTENDED FOR STANDING WOOD, METAL OR PAINTED OR VARNISHED PLASTIC SURFACES SIDCHROME WILL NOT BE LIABLE IF THE MACHINE IS USED FOR ANY OTHER PURPOSE.
- THIS MACHINE HAS NOT BEEN DESIGNED TO BE USED IN AN EXPLOSIVE ATMOSPHERE.
- This machine and its accessories must be used in compliance with these instructions. Using it for any other purpose may cause a risk of danger for people and the environment
- Always operate, inspect and maintain this machine in accordance with all regulations (local, state, federal and country), that may apply to hand held/hand operated pneumatic machine.
- For safety, top performance, and maximum durability of parts, operate this machine at 90 psig (6.2 bar/620 kPa) maximum air pressure at the inlet with 3/8" (10 mm) inside diameter air supply hose.
- Exceeding the maximum pressure of 90 psig (6.2 bar/620 kPa) bar will lead to the risk of danger such as excessive speed, breaking parts, higher torque or force that may destroy the machine and its accessories or the part being worked on.
- Be sure all hoses and fittings are the correct size and are tightly secured.
- Always use clean, dry and lubricated air at 90 psig (6.2 bar/620 kPa) maximum air pressure. Dust, corrosive fumes and/or excessive moisture can ruin the motor of an air machine.
- Do not lubricate machine with flammable or volatile liquids such as kerosene, diesel or petrol.
- Do not remove any labels. Replace any damaged label.
- The use of a hose whip is recommended. A coupler connected directly to the air inlet increases tool bulk and decreases tool maneuverability.
- The pneumatic machine must be fitted and connected to the compressed air network via quick disconnects to facilitate shutdown in the event of danger
- When the life of the tool has expired, it is recommended that the machine be disassembled, de-greased and parts be separated by material so that they can be recycled.



## Using The Machine

- Before using the machine, check that there is no dangerous interaction with the immediate environment (explosive gas, inflammable or dangerous liquid, unknown piping, electric sheathing or cable, etc)
- Before connecting the machine to the air inlet, check the trigger is not blocked in the on position by an obstacle and no adjustment or assembly tool is still in position.
- Check the machine is connected to the network by a quick disconnect joint and that an air breaker valve is close by to shut the air down immediately in the event of blockage, breakage or any other incident.
- Keep hands, loose clothing and long hair away from rotating end of machine.
- Check the position of the inversion system before starting the machine
- Anticipate and be alert for sudden changes in motion during start up and operation of any power machine.
- Ensure that the unit on which the work is being carried out is immobilised.
- In the event of blockage, release the trigger and disconnect the machine from the compressed air network.
- Use accessories recommended by Sidchrome.
- The use of other than genuine Sidchrome replacement parts may result in safety hazards, decreased machine performance, and increased maintenance, and cancel all warranties.
- Repairs should be made only by authorized trained personnel. Consult your nearest Sidchrome Authorized Service center.



## WARNING



Do not use damaged, frayed or deteriorated air hoses and fittings.



Air powered machine can vibrate in use. Vibration, repetitive motions or uncomfortable positions may be harmful to your hands and arms. Stop using any machine if discomfort, tingling feeling or pain occurs. Seek medical advice before resuming use.



Do not carry the machine by the hose.



Keep body stance balanced and firm. Do not overreach when operating this machine. Do not use the machine under the influence of drugs, alcohol, medication or if you are tired.



Use protective equipment such as glasses, gloves, safety shoes as well as acoustic protection. Remain vigilant, use common sense and pay attention when using the machine.



Always turn off the air supply and disconnect the air supply hose before installing, removing or adjusting any accessory on this machine, or before performing any maintenance on this machine.



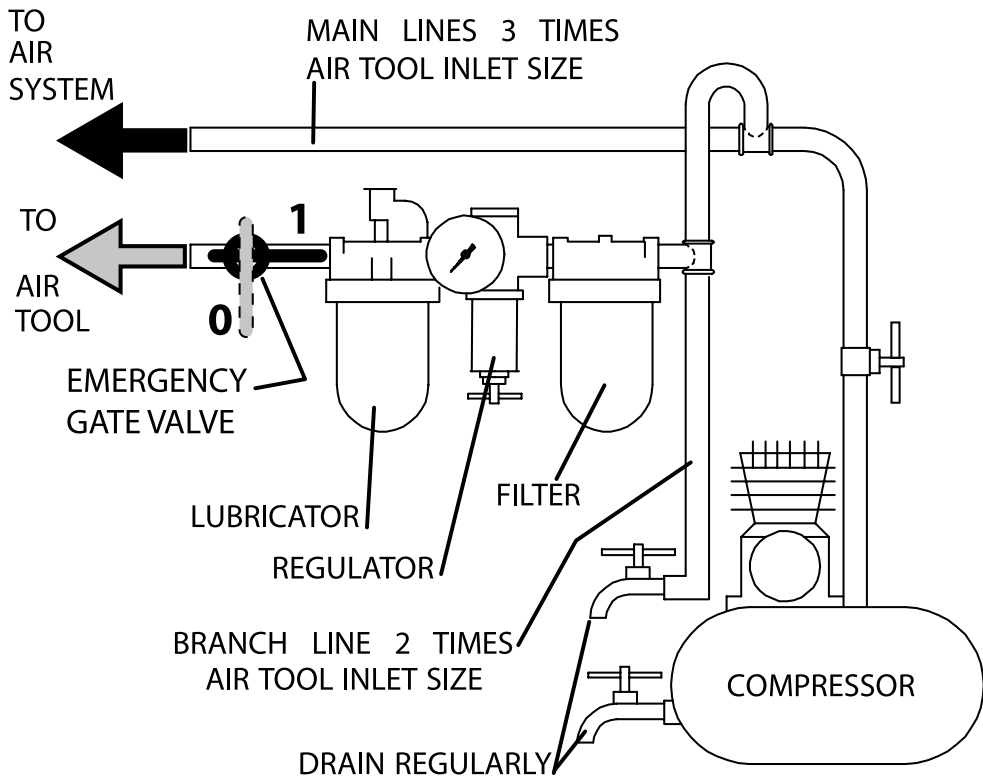
When working with certain materials, exposure to dust may be dangerous for health. Get information on the composition of the material you are working on and use suitable protective equipment. If in doubt, use as much protection as possible.

## Getting Started With The Machine

### LUBRICATION

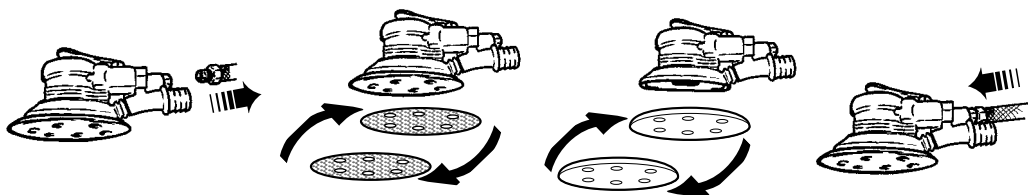
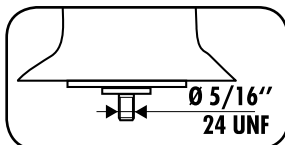


- Always use of an air line lubricator with these tools. We recommend USING Sidchrome fresh air oil SCMTSAT0-250
- Every eight hours' operation, if a lubricator is not used on the compressed air network, inject 1/2 to 1cm<sup>3</sup> through the machine's inlet connection.





**WARNING - REMOVE AIRHOSE WHEN SWAPPING/REMOVING ACCESSORIES**

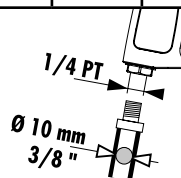


**WARNING - WEAR APPROPRIATE PROTECTION**

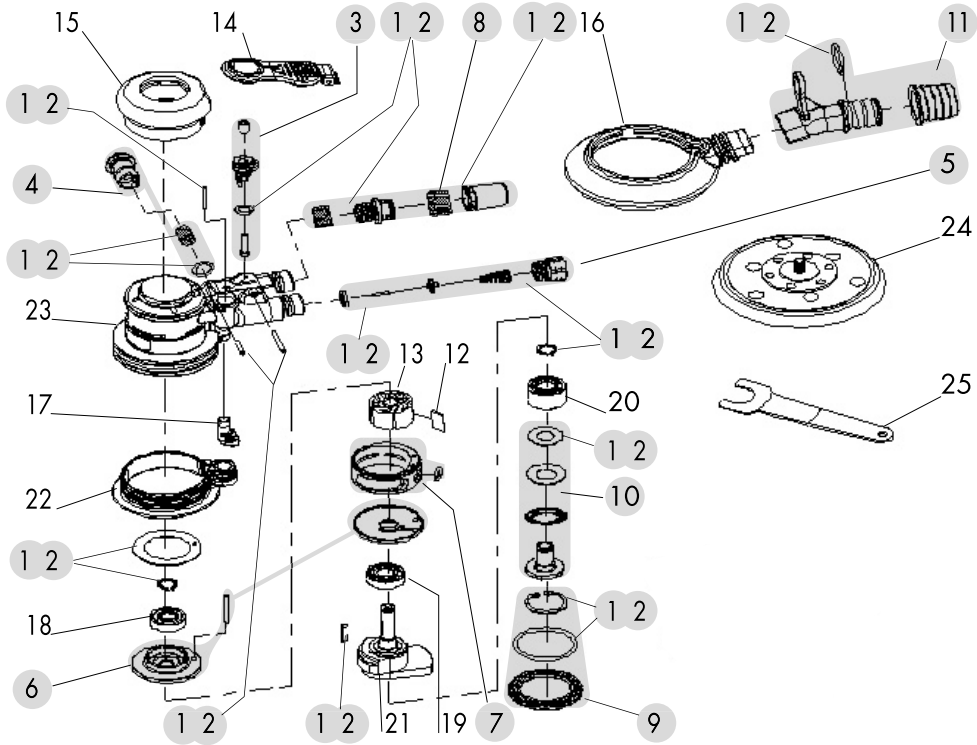


Model	Pad	Orbit	Noise level						Vibrations level m/s²	
			Pressure dB(A)		Power dB(A)		Pressure dB(C)			
	mm	mm		k*		k*		k*		k**
SCMTSA-OS1	Ø 152	2.5	84	3	95	3	103	3	11.26	2.76

Model	Free speed	Air consumption	Working pressure	Weight	Dimensions
	rpm	l/min	bar	kg	mm
SCMTSA-OS1	10000	212	6.2	0.84	221x152x106



\* k = measurement uncertainty in dB    \* k = measurement uncertainty in m/s<sup>2</sup>



N°	SCMTSA-0S1	Qty		N°	SCMTSA-0S1	Qty
1	V.252FKEJ	1		14	V.252FSAV13	1
2	V.252FKEV	1		15	V.252FSAV02	1
3	V.252FKR1	1		16	V.252FSAV12	1
4	V.252FKR2	1		17	V.252FSAV11	1
5	V.252FKR3	1		18	V.252FSAV29	1
6	V.252FKR4	1		19	V.252FSAV35	1
7	V.252FKR5	1		20	V.252FSAV39	1
8	V.252FKR6	1		21	V.252FSAV37	1
9	V.252FKR7	1		22	V.252FSAV48	1
10	V.252FKR8	1		23	V.252FSAV01	1
11	V.252FKR9	1		24	V.252A1	1
12	V.252FSAV32B	5		25	V.252FCLE	1
13	V.252FSAV31B	1				

**SCMTSA-OS1**  
Operation and Maintenance Manual



**YOU CANNA  
HAND A MAN  
A GRANDER  
SPANNER**

Sidchrome Australia National Call Centre 1800 338 002  
Sidchrome New Zealand 0800 339 258  
© Sidchrome is a Registered Trademark.



Manufactured in Taiwan to Sidchrome's design & specifications © 2014

**ORBITAL SANDER**