



SCMTSA-050M

Operation and Maintenance Manual



WARNING

Before operating this tool, all operators should study this manual to understand and follow the safety warnings and instructions. Keep these instructions with the tool for future reference. If you have any questions, contact your **SIDCHROME** representative or distributor.

© 2017 Sidchrome

1/2" Mini Air Impact Wrench

TABLE OF CONTENTS

Introduction	2
Safety Instructions	3
Specifications	4
Getting Started	5
Tool Components	6 - 7
Contact Information	8

INTRODUCTION

The Sidchrome SCMTSA-050M is a precision-built tool, designed for professionals for high torque assembly and disassembly of threaded fasteners. This tool will deliver efficient, dependable service when used correctly and with care. As with any fine power tool, for best performance the manufacturer's instructions must be followed. Please study this manual before operating the tool and understand the safety warnings and instructions. The instructions on installation, operation and maintenance should be read carefully, and the manuals kept for reference.

NOTE: Additional safety measures may be required because of your particular application of the tool. Contact your **SIDCHROME** representative or distributor with any questions concerning the tool and its use.

Sidchrome
810 Whitehorse Road
Box Hill Victoria 3128 Australia

Customer Service Phone Number 1800 338 002



WARNING

IMPORTANT SAFETY INFORMATION ENCLOSED.
 READ THIS MANUAL BEFORE OPERATING THE MACHINE.
 SAVE FOR FUTURE REFERENCE.

FAILURE TO OBSERVE THE FOLLOWING WARNINGS COULD RESULT IN INJURY.



Do not use damaged, frayed or deteriorated air hoses and fittings.



Air powered tools can vibrate in use. Vibration, repetitive motions or uncomfortable positions may be harmful to your hands and arms. Stop using any tool if discomfort, tingling feeling or pain occurs. Seek medical advice before resuming use.



Do not carry the tool by the hose.



Keep body stance balanced and firm. Do not overreach when operating this tool.



Always turn off the air supply and disconnect the air supply hose before installing, removing or adjusting any accessory on this tool, or before performing any maintenance on this tool.



Always wear hearing protection when operating this tool.



Always wear eye protection when operating or performing maintenance on this tool.



Always wear respiratory protection when operating this tool.



Operate at 90 psig (6.2 bar / 620 kPa) maximum air pressure.

GENERAL SAFETY INSTRUCTIONS



- Keep away from children
- Always wear safety eye protection when operating or performing maintenance on this tool. Everyday eye glasses are not safety glasses
- Always wear hearing protection when operating this tool
- Keep hands, loose clothing and long hair away from rotating end of tool
- Anticipate and be alert for sudden changes in motion during start up and operation of any power tool
- Keep body stance balanced and firm. Do not overreach when operating this tool
- Air power tools can vibrate in use. Vibration, repetitive motions or uncomfortable positions may be harmful to your hands and arms. Stop using any tool if discomfort, tingling feeling or pain occurs. Seek medical advise before resuming use
- Stay alert. Do not use the tool while tired or under the influence of drugs, alcohol, or medication
- Use impact rated accessories recommended by Sidchrome. Non-impact accessories may break and cause a hazardous condition. Inspect accessories prior to use to ensure that it contains no cracks
- Do not operate this tool in the presence of flammable liquids, gasses, dust, or explosive atmospheres
- This tool is not insulated against electric shock, contact with a live wire will make exposed metal parts live
- Always turn off the air supply and disconnect the air supply hose before installing, removing or adjusting any accessory on this tool, or before performing any maintenance on this tool
- Avoid unintentional starting. Be sure trigger is off before connecting to the air supply
- For safety, top performance, and maximum durability of parts, operate this tool at 90 psig (6.2 bar / 620 kPa) maximum air pressure at the inlet with 3/8" (10mm) inside diameter air supply hose. Adequate air supply volume is required for full power. Restrictions in the supply and volume will cause a drop in air pressure when the trigger is pulled resulting in lower power
- Do not use damaged, frayed or deteriorated air hoses and fittings
- Do not lubricate tools with flammable or volatile liquids such as kerosene, diesel or jet fuel
- Do not remove any labels. Replace any damaged label
- Tool service must be performed by qualified repair personnel. When servicing, use only Sidchrome authorized, identical replacement parts. Use only lubricants recommended by Sidchrome
- Do not use the tool if the trigger does not turn the tool on or off
- Accessories and tools get hot during operation. Wear gloves when touching them

SPECIFICATIONS

COMPACT

Only 4.4 inches (111mm) in length

HIGH TORQUE

635 Ft-lbs (861Nm) breakaway torque

VARIABLE SPEED TRIGGER

For speed control

ONE-HAND FORWARD/REVERSE SWITCH

With integrated 3-position regulator for power control and ease of use

RUBBER BUMPERS

Protect tool from damage

COMFORT GRIP

Rubber injected overlay, resistant to oils and acids

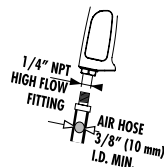


Model #	Square Drive	Blow rate	Breakaway Torque		Noise Level				Vibration Level	
	in	bpm	Nm / ft-lbs.	Pressure dB(A)	Power dB(A)	Pressure dB(C)			m/s²	
SCMTSA-050M	1/2"	1650	861 / 635	97.1	3.0*	108.1	3.0*	<130	3.0*	9.57 1.44**

Free Speed	Average Air Consumption	Working Pressure	Weight	Dimensions		
rpm	cfm / l / min	psi / bar	kg. / lbs.	Length	Width	Height
10,000	4.5 / 127	90 / 6.2	1.3 / 2.8	111mm	61.5mm	173mm

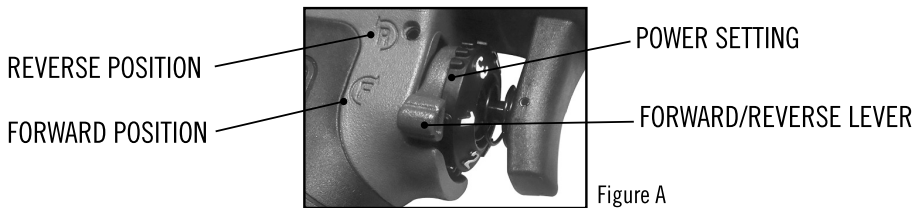
* = measurement uncertainty in dB(A)

** = measurement uncertainty in m/s²

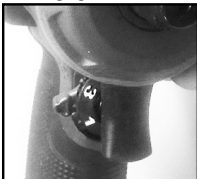


GETTING STARTED

- Always operate, inspect and maintain this tool in accordance with all regulations (local, state, federal and country) that may apply to hand-held / hand-operated pneumatic tools
- Be sure all hoses and fittings are the correct size and are tightly secured
- Always use clean, dry air at 90 psig maximum air pressure. Dust, corrosive fumes and/or excessive moisture can ruin the motor of an air tool
- The use of a hose whip is recommended. A coupler connected directly to the air inlet increases tool bulk and decreases tool maneuverability
- For maximum performance, the coupler on the wall should be the next size larger than the coupler used on the tool. The coupler closest to the tool should not be less than the proper air supply hose size
- The regulator has 3 power positions, position 1 is the lowest and 3 is full power. To set the tool power with the regulator, turn the dial until the power setting represented by 1, 2 or 3 is under the lever in the forward position as shown in Figure A. When the reverse setting is selected the tool will operate, in reverse, at full power regardless of the power setting that is chosen. The F on the handle represents forward and the R represents reverse.
- The Forward / Reverse Lever must be fully engaged in either the forward or reverse position to ensure the tool works with maximum performance. If the Forward / Reverse Lever is positioned in the middle (see example below, bottom left picture) between forward and reverse, the tool will not be as efficient and powerful



Not Engaged - No Power



Power Setting - 1 (Low)



Power Setting 2



Power Setting 3 (Max)

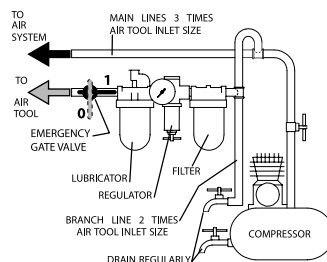


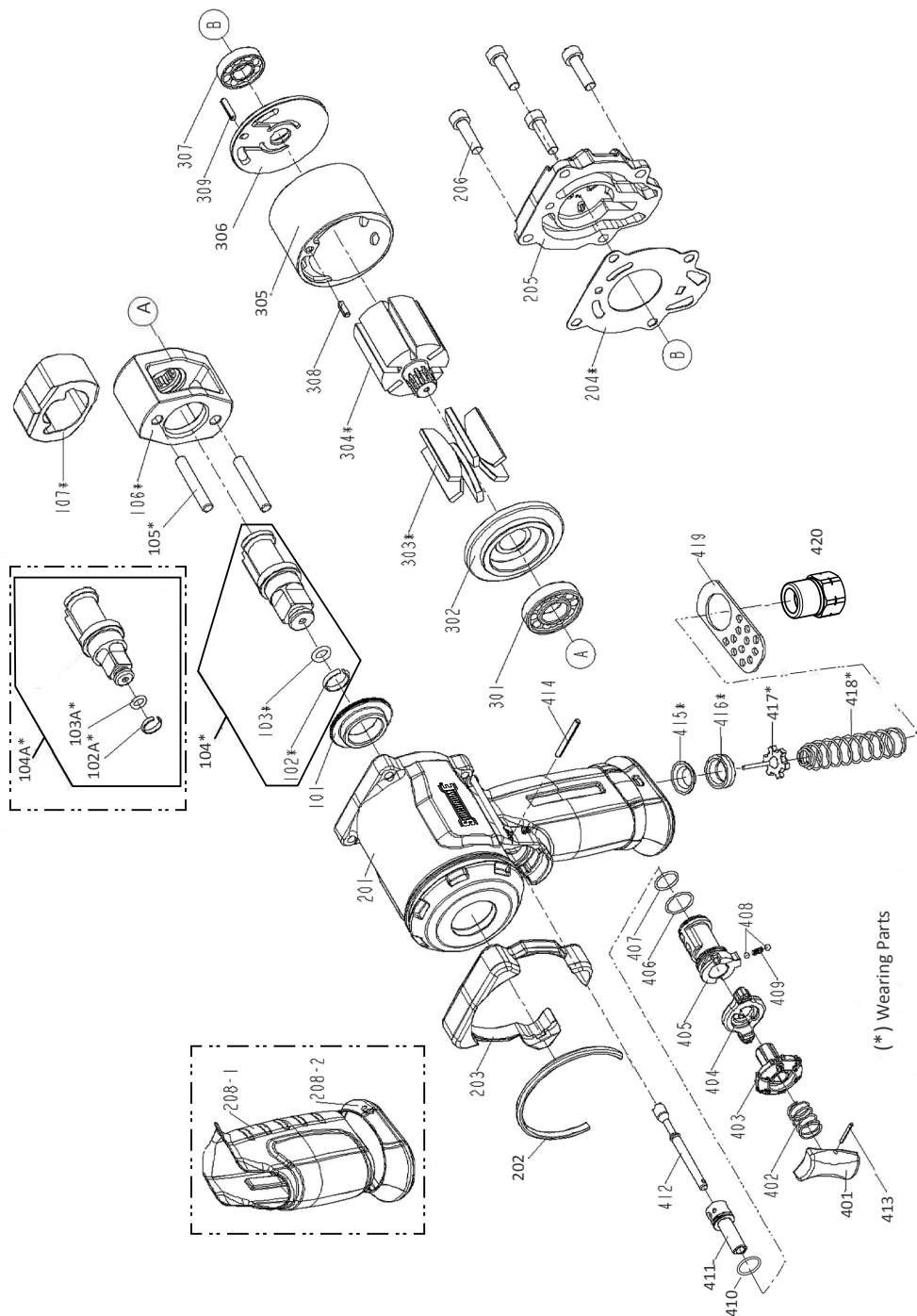
PLACING TOOL IN SERVICE

LUBRICATION



Always use an air line lubricator with this tool. After every eight hours of operation, if a lubricator is not used on the compressed air network, inject 1/2 to 1 cc of approved air tool oil through the tool's inlet connection.





(*) Wearing Parts

ITEM #	PART #	DESCRIPTION	QTY
305	N449301	CYLINDER	1
306	N449302	REAR END PLATE	1
307	N449303	BEARING	1
308	N449304	SPRING PIN	1
309	N449305	SPRING PIN	1
401	N449296	TRIGGER	1
402	N449297	SPRING	1
403	N449306	REGULATOR A	1
404	N449307	LEVER	1
405	N449315	REVERSE VALVE	1
406	N449316	O-RING	1
407	N449317	O-RING	1
408	N449318	BALL-DETENT	2
409	N449319	POSITIONING SPRING	1
410	N449320	O-RING	1
411	N449321	REGULATOR B	1
412	N449322	TRIGGER PIN-TIP VALVE	1
413	N449323	SPRING PIN	1
414	N449324	SPRING PIN	1
415	N449325	BUSHING-TIP VALVE	1
416	N449326	SEAL-TIP VALVE	1
417	N449327	TIP VALVE	1
418	N449328	SPRING	1
419	N449330	EXHAUST DEFLECTOR	1
420	N449332	AIR INLET	1

ITEM #	PART #	DESCRIPTION	QTY
101	N449222	HAMMER CASE BUSHING	1
104	N449227	1/2" ANVIL ASSEMBLY	1
102	N449223	1/2" SOCKET RETAINER RING	1
103	N449225	1/2" O-RING	1
104A	N449228	3/8" ANVIL ASSEMBLY	1
102	N449224	3/8" SOCKET RETAINER RING	1
103	N449226	3/8" O-RING	1
105	N449229	HAMMER PIN	1
106	N449230	HAMMER FRAME	1
107	N449231	HAMMER	1
201	N455530	3/8" HOUSING	1
201	N449272	1/2" HOUSING	1
202	N449284	FRONT BUMPER	1
203	N449285	REAR BUMPER	1
204	N449286	GASKET (PACKING)-MOTOR	1
205	N449287	REAR COVER PLATE	1
206	N449288	HEX.SOC.HD.BOLT	4
208-1	N449290	GRIP A	1
208-2	N449291	GRIP B	1
301	N449293	BEARING	1
302	N449298	FRONT BEARING PLATE	1
303	N449299	ROTOR BLADES	6
304	N449300	ROTOR	1



SCMTSA-050M

**Operation and
Maintenance Manual**



**YOU CANNA
HAND A MAN
A GRANDER
SPANNER**

Sidchrome Australia National Call Centre 1800 338 002

Sidchrome New Zealand 0800 339 258

® Sidchrome is a Registered Trademark.



Manufactured in Taiwan to Sidchrome's design & specifications © 2017

1/2" Mini Air Impact Wrench